



ADVANCED
LAB 3

URINARY TRACT INFECTION MOLECULAR PANEL

Detect and differentiate **24 bacteria agents** and **6 fungal pathogens** from one sample, all in one test.

Molecular urinary tract infection testing identifies the DNA of the bacteria that is causing your symptoms. The test is performed in our CLIA certified high complexity lab and delivers results within 24-48 hours of collecting of sample (Urine Specimen).

This technology changes the way UTI's have been treated. Waiting three to five days to get the specifics on how to treat your infection effectively is now a thing of the past.

SAMPLE TYPE : Urine

Results within
24 Hours
from arrival at lab

- Detect and identify 24 microbial pathogens and subtypes.
- Data Masking option enables select target reporting based on clinician's order.



(For Provider's Reference)

PATHOGENS DETECTED

Our reports provide **semi quantitative analysis** with **recommended medications** to help with decision making.

Bacteria

Acinetobacter baumannii
 Staphylococcus aureus
 Klebsiella pneumoniae
 Morganella morganii
 Staphylococcus saprophyticus
 Aerococcus urinae
 Pseudomonas aeruginosa
 Enterococcus faecium
 Streptococcus agalactiae
 Providencia stuartii
 Treponema pallidum
 Enterococcus faecalis
 Ureaplasma urealyticum
 Proteus vulgaris
 Serratia marcescens

Proteus mirabilis
 Escherichia coli
 Klebsiella oxytoca
 Ureaplasma parvum
 Klebsiella aerogenes
 Enterobacter cloacae
 Citrobacter freundii

Fungi

Candida parapsilosis
 Candida glabrata
 Candida auris
 Candida tropicalis
 Candida krusei
 Candida albicans

Antibiotic Resistance

(w/ medication recommendations)

KPC - Carbapenem resistance
 NDM - Carbapenem resistance
 VIM - Carbapenem resistance
 IMP - Carbapenem resistance
 OXA-48 - Carbapenem resistance
 CTX-M ESBL
 vanA - Vancomycin resistance
 vanB - Vancomycin resistance
 qnr - Quinolone resistance
 mecA/mecC - Methicillin resistance
 sul - Sulfonamide resistance
 dfrA - Trimethoprim resistance

Contact Advanced Lab 3 at

847-873-8012 | info@myadvancedlab.com | myadvancedlab.com
 1800 McDonough Rd Suite 209, Hoffman Estates, IL 60192.



ADVANCED
LAB 3

RESPIRATORY PATHOGEN PANEL

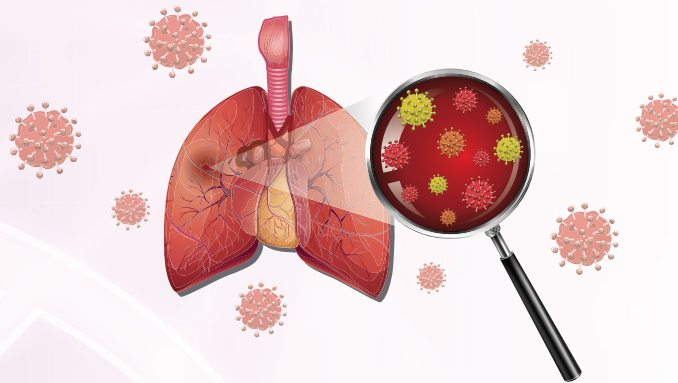
Detect and differentiate **19 viral** and **6 bacterial agents** from one sample, all in one test.

Respiratory Pathogen Panel (RPP) is a semi quantitative multiplexed nucleic acid-based in vitro diagnostic. RPP is capable of the simultaneous detection and identification of nucleic acids from multiple viruses and bacteria extracted from nasopharyngeal swab (NPS) samples obtained from individuals with signs and/or symptoms of respiratory tract infection.

SAMPLE TYPE : Nasopharyngeal Swab

- Detect and identify 25 microbial pathogens and subtypes.
- Data Masking option enables select target reporting based on clinician's order.

Results within
24 Hours
from arrival at lab



(For Provider's Reference)

PATHOGENS DETECTED

Our reports provide **semi quantitative analysis** with **recommended medications** to help with decision making.

Viral Agents

SARS-COV-2
 Influenza A
 Influenza B
 Human Coronavirus 229E
 Human Coronavirus OC43
 Human Coronavirus NL63
 Human Coronavirus HKU1
 Parainuenza 1
 Parainuenza 2
 Parainuenza 3
 Parainuenza 4
 Metapneumovirus (MPV)
 Respiratory Syncytial
 Virus (RSV) A/B
 Enterovirus (HEV)
 Adenovirus (AV)

Human Bocavirus (HBov)
 Human Parechovirus (HPeV)
 Rhinovirus (HRV)
 Haemophilus Influenzae

Bacteria Agents

Legionella pneumophila
 Mycoplasma pneumoniae
 Chlamydomphila pneumoniae
 Haemophilus Influenzae
 Bordetella pertussis
 Streptococcus pneumoniae
 Streptococcus spp.
 Enterococcus faecium
 Escherichia coli
 Nisseria Meningitidis

Antibiotic Resistance (if requested)

KPC - Carbapenem resistance
 NDM - Carbapenem resistance
 VIM - Carbapenem resistance
 IMP - Carbapenem resistance
 OXA-48 - Carbapenem resistance
 CTX-M ESBL
 vanA - Vancomycin resistance
 vanB - Vancomycin resistance
 qnr - Quinolone resistance
 mecA/mecC - Methicillin resistance
 sul - Sulfonamide resistance
 dfrA - Trimethoprim resistance

Contact Advanced Lab 3 at

847-873-8012 | info@myadvancedlab.com | myadvancedlab.com
 1800 McDonough Rd Suite 209, Hoffman Estates, IL 60192.

SEXUALLY TRANSMITTED INFECTION STI PANEL

Detect and differentiate **14 pathogens**.

Sexually transmitted diseases (STDs), also called sexually transmitted infections (STIs) or venereal diseases, are contagious infections caused by pathogens (bacteria, virus, parasite) and are characterized by transmission from person to person through sexual activity and intimate contact.

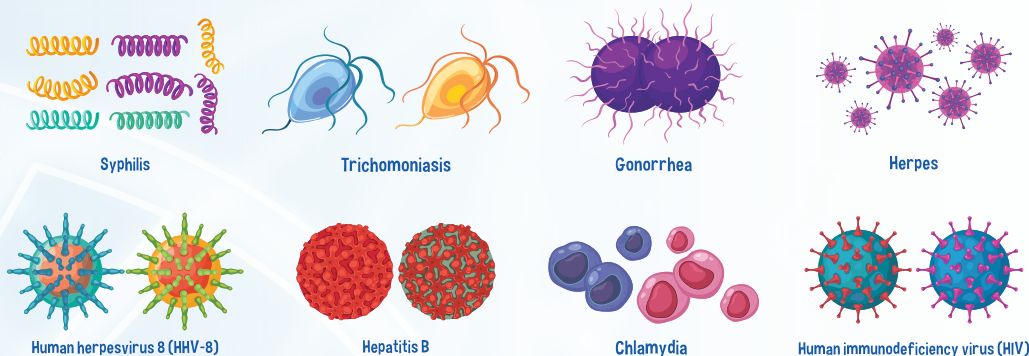
There are severe complications implicated with untreated STIs, and they are also known to amplify the risk of HIV transmission.

SAMPLE TYPE : Urine, Vaginal Swab, Blood

- Detect and identify 14 pathogens and subtypes.
- Data Masking option enables select target reporting based on clinician's order.

Results within
24 Hours
from arrival at lab

Common Sexually Transmitted Infections (STI)



(For Provider's Reference)

PATHOGENS DETECTED

Our reports provide semi quantitative analysis with recommended medications to help with decision making.

Bacteria

Mycoplasma genitalium
Neisseria gonorrhoeae
Chlamydia trachomatis
Treponema pallidum
Ureaplasma parvum/ urealyticum
Mycoplasma hominis
Syphilis
Gardnerella vaginalis

Virus

Herpes simplex virus 1
Herpes simplex virus 2
HepatitisA*
HepatitisB*
HIV*

* (need to be collected from a blood sample)

Parasites

Trichomonas vaginalis

Antibiotic Resistance (if requested)

KPC - Carbapenem resistance
NDM - Carbapenem resistance
VIM - Carbapenem resistance
IMP - Carbapenem resistance
OXA-48 - Carbapenem resistance
CTX-M ESBL
vanA - Vancomycin resistance
vanB - Vancomycin resistance
qnr - Quinolone resistance
mecA/mecC - Methicillin resistance
sul - Sulfonamide resistance
dfrA - Trimethoprim resistance

Contact Advanced Lab 3 at

847-873-8012 | info@myadvancedlab.com | myadvancedlab.com
1800 McDonough Rd Suite 209, Hoffman Estates, IL 60192.



ADVANCED
LAB 3

GASTROINTESTINAL PATHOGEN PANEL

Detect and differentiate **24 pathogens** from one sample, all in one test

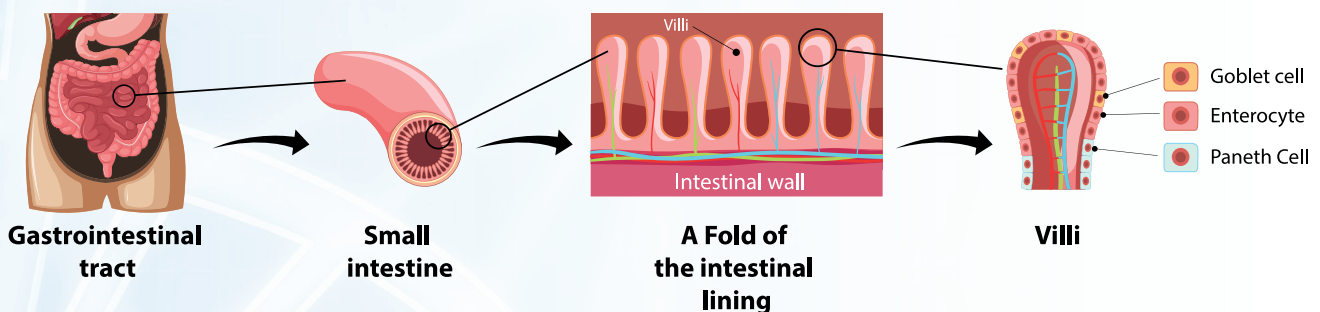
Gastrointestinal Pathogen Panel (GPP) utilizes proven Barcoded Magnetic Beads (BMB) technology to detect specific gastrointestinal microbial nucleic acid from individuals exhibiting signs and symptoms of infections.

GPP Assay is a flexible, comprehensive molecular test that detects and identifies 5 viral, 15 bacterial and 4 parasitic agents in raw stool specimens or rectal swab medium from symptomatic patients.

SAMPLE TYPE : Stool, Stool Swab, Rectal Swab

Results within
48 Hours
from arrival at lab

- Detect and identify nucleic acids from multiple bacterial, viral and parasitic pathogen targets found in human stool.
- Data Masking option enables select target reporting based on clinician's order.



(For Provider's Reference)

PATHOGENS DETECTED

Our reports provide **semi quantitative analysis** with **recommended medications** to help with decision making.

Bacterial Gastroenteritis/colitis

Salmonella spp.
 Campylobacter spp.
 Vibrio parahemolyticus
 Vibrio Cholerae
 Yersinia enterocolitica Plesiomonas
 Enteroinvasive E. coli (EIEC)
 Enteroaggregative E. coli (EAEC)
 Shiga-like toxin producing E. coli stx1/stx2 (STEC)
 Enteropathogenic E. coli (EPEC)
 Enterotoxigenic E. coli LT/ST (ETEC)
 Clostridium difficile toxin B
 Clostridium difficile toxin A
 Clostridium difficile binary toxin A/B

Viral Gastroenteritis

Sapovirus (GI / GII / GIV / GV)
 Astrovirus
 Norovirus (GI / GII)
 Rotavirus (A)
 Adenovirus

Parasites

Cryptosporidium spp.
 Cyclospora cayetanensis
 Entamoeba histolytica
 Giardia lamblia
 Internal Control: MS2

Antibiotic Resistance (if requested)

KPC - Carbapenem resistance
 NDM - Carbapenem resistance
 VIM - Carbapenem resistance
 IMP - Carbapenem resistance
 OXA-48 - Carbapenem resistance
 CTX-M ESBL
 vanA - Vancomycin resistance
 vanB - Vancomycin resistance
 qnr - Quinolone resistance
 mecA/mecC - Methicillin resistance
 sul - Sulfonamide resistance
 dfrA - Trimethoprim resistance

Contact Advanced Lab 3 at

847-873-8012 | info@myadvancedlab.com | myadvancedlab.com
 1800 McDonough Rd Suite 209, Hoffman Estates, IL 60192.



ADVANCED
LAB 3

SEPSIS/WOUND

Detect and differentiate **17 bacteria agents** and **5 fungal pathogens** from one sample, all in one test

Sepsis causes long hospital stays and deaths. If a patient receives the correct antimicrobial therapy within the first hour of diagnosis, the chance of survival is close to 80%; this rate decreases by 7.6% for each hour of delay. Rapid and accurate diagnosis of infectious agents with Biospeedy® Sepsis qPCR MX-30S panel. Multiplex detection of 5 fungal, 17 bacterial and 9 antimicrobial resistance gene agents in a single strip.

Rapid and accurate diagnosis lead to early and effective treatment in infectious agents. Early and effective treatment saves lives, shortens hospital stays, and prevents unnecessary drug use. It ensures the most efficient use of resources.

SAMPLE TYPE : Swab

- Reduces the risk of the death with the opportunity to reach the appropriate treatment quickly.
- Compatible with diverse sample types including whole blood.
- Each strip/ 1 sample

Results within
48 Hours
from arrival at lab



(For Provider's Reference)

PATHOGENS DETECTED

Our reports provide **semi quantitative analysis** with **recommended medications** to help with decision making.

Bacterial Agents

Staphylococcus aureus
 Staphylococcus spp.
 Listeria monocytogenes
 Pseudomonas aeruginosa
 Klebsiella pneumoniae
 Acinetobacter baumannii
 Haemophilus influenzae
 Klebsiella oxytoca
 Enterococcus faecium
 Enterococcus faecalis
 Pseudomonas spp.
 Enterobacteriaceae
 Streptococcus spp.
 Stenotrophomonas maltophilia
 Escherichia coli
 Neisseria meningitidis
 Streptococcus pneumoniae

Fungal Agents

Candida glabrata
 Candida tropicalis
 Candida krusei
 Candida albicans
 Candida parapsilosis

Antibiotic Resistance (w/ medication recommendations)

KPC - Carbapenem resistance
 NDM - Carbapenem resistance
 VIM - Carbapenem resistance
 IMP - Carbapenem resistance
 OXA-48 - Carbapenem resistance
 CTX-M ESBL
 vanA - Vancomycin resistance
 vanB - Vancomycin resistance
 qnr - Quinolone resistance
 mecA/mecC - Methicillin resistance
 sul - Sulfonamide resistance
 dfrA - Trimethoprim resistance

Contact Advanced Lab 3 at

847-873-8012 | info@myadvancedlab.com | myadvancedlab.com
 1800 McDonough Rd Suite 209, Hoffman Estates, IL 60192.



UTI by Molecular Method

Advanced Lab 3
 1800 McDonough Rd Suite 209
 Hoffman Estates, IL 60192
 CLIA ID: 14D2245475
 Director: Dr. Harsukh Gevariya
 Phone: 847-873-8012
 Email: info@myadvancedlab.com

PATIENT		SPECIMEN		PHYSICIAN	
Name:	Last, First	Specimen Type:	Urine	Name:	Last, First
D.O.B.:	xx/xx/xxxx	Collection:	xx/xx/xxxx	Address:	xx/xx/xxxx
Age:	yrs	Received:	xx/xx/xxxx	Phone:	xx
Gender:	Female	Reported:	xx/xx/xxxx		
Accession:	SAID1427				

UTI by Molecular Method Testing Results: **Positive**

Result Summary

Pathogens Detected:

- › Escherichia coli **>100,000CFU/mL**
- › Enterococcus faecalis **10,000 - 100,000CFU/mL**

Antibiotic Resistance Genes Detected:

- › Macrolide/Clindamycin

Suggested Treatment

Drug of Choice:

Ampicillin

Acute simple cystitis: 500mg PO Q6hrs x 5-7 days. Complicated UTI: 1-2g PO q4-6hrs; can be used in combination with aminoglycoside for critical illness
 Not recommended for empiric therapy - decreased efficacy compared to other first-line agents

Alternative drugs/combination:

Amoxicillin

Asymptomatic bacteriuria: 500mg PO q8hr or 875mg PO q12hrs for 4-7 days. Acute uncomplicated Cystitis: 500mg PO q8hrs

Cephalexin

Acute simple cystitis: 250-500mg PO q6hrs x 5-7 days

Drugs not tested for ABR but Commonly Use:

Trimethoprim/Sulfamethoxazole

Acute simple cystitis: 1 double strength tab (160/800mg) PO BID x 3 days (female) x 7 days (male). Complicated infection: 1 DS tab PO BID x 14 days

No hepatic adjustment necessary but if drug induced liver injury is suspected then consider discontinuing

Nitrofurantoin

Acute simple cystitis treatment: Nitrofurantoin monohydrate/macrocrystals (Macrobid) 100mg PO BID x 5 days (female) x 7 days (male). Nitrofurantoin macrocrystals (Furadantin or Microdantin): 50-100mg PO q6hrs x 5 days (female) x 10 days (male)

There are 2 forms of nitrofurantoin and dosing will differ depending on brand - most commonly prescribed is Macrobid. This medication is CONTRAINDICATED in CrCl 30-60 per manufacturer labeling but there is limited data that a short course for acute treatment in eGFR 30-60 ml/min is safe and effective. At CrCl<30 - avoid use!



UTI by Molecular Method

Advanced Lab 3
 1800 McDonough Rd Suite 209
 Hoffman Estates, IL 60192
 CLIA ID: 14D2245475
 Director: Dr. Harsukh Gevariya
 Phone: 847-873-8012
 Email: info@myadvancedlab.com

PATIENT		SPECIMEN		PHYSICIAN	
Name:	Last, First	Specimen Type:	Urine	Name:	Last, First
D.O.B.:	xx/xx/xxxx	Collection:	xx/xx/xxxx	Address:	xx/xx/xxxx
Age:	yrs	Received:	xx/xx/xxxx	Phone:	xx
Gender:	Female	Reported:	xx/xx/xxxx		
Accession:	SAID1427				

UTI 2 by Molecular Method Result Summary

PATHOGENS		RESULTS	MICROBIAL LOAD (CFU/ML)	GRADE	REFERENCE RANGE
GRAM NEGATIVE BACTERIA					
	Staphylococcus aureus	Not Detected			Not Detected
☒	Enterococcus faecalis	Detected	10,000 - 100,000	Medium	Not Detected
	Enterococcus faecium	Not Detected			Not Detected
	Staphylococcus saprophyticus	Not Detected			Not Detected
	Streptococcus agalactiae	Not Detected			Not Detected
GRAM POSITIVE BACTERIA					
	Klebsiella pneumoniae	Not Detected			Not Detected
	Acinetobacter baumannii	Not Detected			Not Detected
	Citrobacter freundii	Not Detected			Not Detected
	Enterobacter cloacae	Not Detected			Not Detected
☒	Escherichia coli	Detected	>100,000	High	Not Detected
	Klebsiella aerogenes	Not Detected			Not Detected
	Klebsiella oxytoca	Not Detected			Not Detected
	Morganella morganii	Not Detected			Not Detected
	Mycoplasma hominis	Not Detected			Not Detected
	Proteus mirabilis	Not Detected			Not Detected
	Proteus vulgaris	Not Detected			Not Detected
	Providencia stuartii	Not Detected			Not Detected
	Pseudomonas aeruginosa	Not Detected			Not Detected
	Serratia marcescens	Not Detected			Not Detected
	Ureaplasma urealyticum	Not Detected			Not Detected
FUNGI					
	Candida albicans	Not Detected			Not Detected
	Candida auris	Not Detected			Not Detected
	Candida glabrata	Not Detected			Not Detected
	Candida krusei	Not Detected			Not Detected
	Candida lusitanae	Not Detected			Not Detected
	Candida parapsilosis	Not Detected			Not Detected
	Candida tropicalis	Not Detected			Not Detected



UTI by Molecular Method

Advanced Lab 3
 1800 McDonough Rd Suite 209
 Hoffman Estates, IL 60192
 CLIA ID: 14D2245475
 Director: Dr. Harsukh Gevariya
 Phone: 847-873-8012
 Email: info@myadvancedlab.com

PATIENT		SPECIMEN		PHYSICIAN	
Name:	Last, First	Specimen Type:	Urine	Name:	Last, First
D.O.B.:	xx/xx/xxxx	Collection:	xx/xx/xxxx	Address:	xx/xx/xxxx
Age:	yrs	Received:	xx/xx/xxxx	Phone:	xx
Gender:	Female	Reported:	xx/xx/xxxx		
Accession:	SAID1427				

Antibiotic List and Recommendations

ANTIBIOTIC CLASS	RESULT	RECOMMENDED	NOT RECOMMENDED
Carbapenem	Not Detected	Meropenem/Vaborbactam Panipenem/Betamipron Imipenem/Cilastatin Biapenem Doripenem Meropenem Ertapenem Imipenem/Cilastatin/Relebactam	
<input checked="" type="checkbox"/> Macrolide/Clindamycin	Detected		Fidaxomicin Azithromycin Clarithromycin Clindamycin
Methicillin	Not Detected	Oxacillin Nafcillin Methicillin	
Penicillin & B-lactam	Not Detected	Amoxicillin Piperacillin Penicillin V ticarcillin Ceftazidime/Avibactam Dicloxacillin Amoxicillin/Clavulanate Piperacillin/Tazobactam Ampicillin Penicillin Carbenicillin Ampicillin/Sulbactam Avibactam/Ceftazidime Penicillin G	
Quinolone	Not Detected	Nalidixic acid Gemifloxacin Trovaflaxacin Moxifloxacin Ofloxacin Delafloxacin Levofloxacin Sparfloxacin Cinoxacin Lomefloxacin Gatifloxacin Norfloxacin Flumequine Ciprofloxacin	
Vancomycin	Not Detected	Vancomycin	



UTI by Molecular Method

Advanced Lab 3
1800 McDonough Rd Suite 209
Hoffman Estates, IL 60192
CLIA ID: 14D2245475
Director: Dr. Harsukh Gevariya
Phone: 847-873-8012
Email: info@myadvancedlab.com

PATIENT		SPECIMEN		PHYSICIAN	
Name:	Last, First	Specimen Type:	Urine	Name:	Last, First
D.O.B.:	xx/xx/xxxx	Collection:	xx/xx/xxxx	Address:	xx/xx/xxxx
Age:	yrs	Received:	xx/xx/xxxx	Phone:	xx
Gender:	Female	Reported:	xx/xx/xxxx		
Accession:	SAID1427				

Antibiotic Resistance Genotyping Result Summary

ANTIBIOTIC RESISTANT GENE	ANTIBIOTIC CLASS	RESULTS	REFERENCE RANGE
NDM	Carbapenem	Not Detected	Not Detected
KPC	Carbapenem	Not Detected	Not Detected
oxa-48	Carbapenem	Not Detected	Not Detected
VIM, IMP-7	Carbapenem	Not Detected	Not Detected
ermA	Macrolide/Clindamycin	Not Detected	Not Detected
<input checked="" type="checkbox"/> ermB	Macrolide/Clindamycin	Detected	Not Detected
mefA	Macrolide/Clindamycin	Not Detected	Not Detected
mecA	Methicillin	Not Detected	Not Detected
femA	Methicillin	Not Detected	Not Detected
CTX-MG2	Penicillin & B-lactam	Not Detected	Not Detected
CTX-MG1	Penicillin & B-lactam	Not Detected	Not Detected
ampC	Penicillin & B-lactam	Not Detected	Not Detected
SHV	Penicillin & B-lactam	Not Detected	Not Detected
TEM	Penicillin & B-lactam	Not Detected	Not Detected
qnrA	Quinolone	Not Detected	Not Detected
qnrB	Quinolone	Not Detected	Not Detected
vanA1, vanA2	Vancomycin	Not Detected	Not Detected
vanB	Vancomycin	Not Detected	Not Detected